

# U TECH CREATION



**U Tech Creation**  
Complete Signage Solutions

**Signage,  
Fabrication &  
Printing Solutions  
in House**



## SERVICES:

- GT & MT BRANDING.
- RETAIL BRANDING SOLUTION.
- POP & POSM DISPLAYS.
- IN & OUT STORE BRANDING ACTIVITIES.
- TRADING OF RETAIL VISIBILITY AIDS.
- FABRICATION (METAL, ACRYLIC, PVC, WOODEN etc)



[utechcreation@gmail.com](mailto:utechcreation@gmail.com)

[utcflex@gmail.com](mailto:utcflex@gmail.com)



Web : [www.skprinters.net](http://www.skprinters.net)



+91 9891923021, +91 9540610535,  
+91 9871291055, Ph : 011 - 4222 7233



Office:- B-224, 1st Floor, Naraina  
Industrial Area, Phase-I, N.Delhi- 28

# OUR SERVICES

- Services Of U Tech Creation
- Decals Cutting, Vinyl Cutting.
- Led, 3d, Fascia Cut Acp Signages.
- Digital, Flex & Eco Solvent Printing.
- Retail Branding Services.
- MDF, Brass, Acrylic And SS Letter.
- Led Glow Signages.
- Vinyl, Frosted Films Etc.
- Direction Signages Etc.
- Display Units.
- Exhibit Display Units.
- In Store Branding.
- Modular Signages.
- Reception Signages.
- Safety And Fire Exit Signages.
- Canopy, T Banner, Rollup Stands
- Welcome Boards.
- Flense
- Danglors, Calanders, Leaflets,
- Business Cards.
- Wobblers Prints,
- Banners
- Billboards & Signboards
- Cut Out Letter 2d
- Door & Office Signs
- Electronic Signs
- Engraved Signs
- Illuminated Signs
- Modular Signs
- Plaques & Awards
- Pylons, Billboards & Free Standing
- Safety & Mandatory Signs
- Sign Writing
- 3d Letters & Logos

## SURVEY AND INSTALLATION OF BRANDING IN RETAIL CHAIN NORTH INDIA.













# Direction Signage Vinyl Letter Cutting



# OFFSET PRINTING





# ACP, SS Acrylic Letter Signages

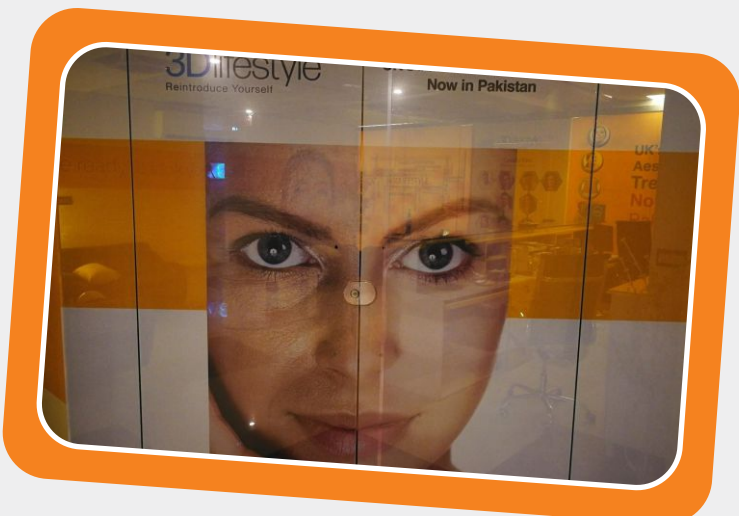
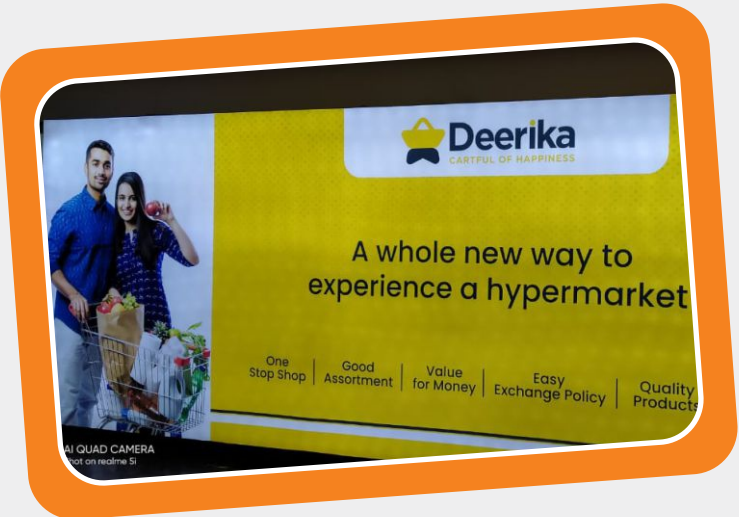


# Inshop, Outdoor Branding





# Hoarding, Oneway Vision Branding



# Our Work Unit





# Our Work Unit



# OUR Brand Partners



MAAS GENERATORS PVT. LTD.







## OUR STRENGTHS

### Client Focus

RP is a client-centric enterprise that works as per client's requirements. It can also devise branding solutions in close consultation with the client-side team.

### Modern Workshop

With latest technology, best equipment & machinery, well organized work floors, adequate fire and other safety measures in place, our Workshop is a reflection of our quality philosophy. It is located in the vicinity of the city.

### Proficient Team

The RP team has the dedication and expertise ensure quality and timely execution of branding related works, be it for indoor, outdoor or on-vehicle applications. There is strict compliance with quality control best practices.

### Cost -Effective Solutions

Each enterprise has unique requirements for nurturing its brand image. RP understands the requirements of the clients and does a thorough research of the market and secures sites and means to obtain optimum visibility. It works in close contact with clients to offer the most competitive prices and value additions.

### Quick Support

When it comes to outdoor, indoor and on-vehicle media for brand building; quick response to market changes is absolutely vital. In this regard, RP has the wherewithal to create, print, fabricate and install large volume branding collaterals quickly.

### Value for Money

High Quality Printing at affordable prices delivered when you need it!